



AIBB Mobile Trading User Guide

For Android Mobile Device

2012

Table of Contents

| | |
|---|-----------|
| Table of Contents | 2 |
| Introduction | 4 |
| What is AIBB Mobile Trading? | 4 |
| About this Guide | 4 |
| Getting Started..... | 5 |
| System Requirements | 5 |
| 1. Operating System | 5 |
| 2. Browser..... | 5 |
| 3. Internet Connection | 5 |
| 4. Screen Display | 5 |
| To install the program..... | 5 |
| Connecting | 6 |
| To Start the Program..... | 6 |
| To Log On | 6 |
| To Access the Menu | 8 |
| To Log Off/Quit the Program | 9 |
| Single Sign In..... | 11 |
| Mobile Trading Session Expiry | 11 |
| HOME button..... | 12 |
| Change Password..... | 12 |
| The AIBB Mobile Trading Menu | 14 |
| Market, Indices, Top 10 Lists | 16 |
| Market | 16 |
| To view Market | 16 |
| Market : The Interface..... | 17 |
| Indices..... | 19 |
| To view Index | 19 |
| Indices: The Interface | 19 |
| To Change Index View from List..... | 21 |
| Top 10 Lists: Most Active Counters, Top Gainers, Top Losers | 22 |
| To View a Top 10 List | 22 |
| Top 10 List: The Interface..... | 22 |
| Single Stock Quote and Favourites..... | 24 |
| Single Stock Quote | 24 |
| To Search and View a Share’s Quote | 24 |
| Single Stock Quote: The Interface..... | 25 |
| Favourites..... | 30 |

| | |
|--|-----------|
| To View a Favourites Folder | 30 |
| To Switch between Views of a Favourites folder | 30 |
| Favourites: The Interface | 31 |
| Placing and Tracking Orders | 42 |
| Placing Orders..... | 42 |
| To Place a Buy Order | 42 |
| To Place a Sell Order | 46 |
| Tracking Orders..... | 50 |
| To View Order Status..... | 50 |
| Order Properties: The Interface | 52 |
| To Reduce or Cancel an Order..... | 54 |
| Portfolio..... | 57 |
| View your Trading Portfolio | 57 |
| Settings | 58 |
| Sets the AIBB Auto Refresh function | 58 |
| View Profile function in AIBB | 59 |
| About Us | 60 |
| View brief information on AIBB..... | 60 |
| Contact Our Helpdesk..... | 61 |

Introduction

What is AIBB Mobile Trading?

AIBB Mobile Trading is a wireless application that provides real-time Malaysian share market information and allows clients to buy and sell shares anytime, anywhere. **AIBB Mobile Trading** is compatible with Android mobile device and work on the Android Operating System.

AIBB Mobile Trading has the following features:

- Single Sign In – one login entry per session.
- Market – get a quick, broad glance of the market.
- Indices – gauge market conditions quickly using index figures and charts.
- Top 10 – Most Active Counters, Top Gainers, Top Losers: to check out the shares with the heaviest volume, the greatest gain and the heaviest loss of the day.
- Stocks – examine a share in detail.
- Lookup and Search – look up a particular share using the exact share code or name, or simply search for it using approximate keywords.
- Favourites – allows you to bookmark shares that you have viewed and you want to keep track of so that you can easily access them in the future.
- Portfolio – displays the trading portfolio.
- Order Status – view and track the order status and order details.
- Settings – Manage your settings for the viewing ID, etc.
- About Us – Brief introduction on **AIBB**.

About this Guide

This guide accompanies Android mobile devices that are compatible with **AIBB Mobile Trading**.

The phrase **AIBB Mobile Trading Menu** describes the menu in the program that lists its main features such as **Market, Indices**, etc.

Getting Started

System Requirements

1. Operating System

Mobile smartphone running on Google Android Operating System (OS) version from v.1.6 to v.2.3.

2. Browser

Browser that support WAP2.0 or HTML.

3. Internet Connection

Minimum internet connectivity with Wi-Fi, GPRS or 3G internet connection must be activated.

4. Screen Display

The recommended screen size is 4.0 inches or 4.3 inches. The supported screen resolution is normal screen – HVGA (320x480), WVGA800 (480x800), WVGA854 (480x854).

Getting **AIBB Mobile Trading** on your Android mobile device is easy. With your **AIBB User ID*** and **Password***:

1. **Download** the installation file to your Android mobile device and then complete the installation.
2. **Log On** to your account using the **AIBB Mobile Trading** application on your device and you will see the **Market** screen.

To install the program

| Step | Do this |
|---|---|
| 1. DOWNLOAD and INSTALL AIBB Mobile Trading application on your Android mobile device. | <ol style="list-style-type: none"> a. On your Android mobile device menu screen, tap Market/Google Play icon. b. In the search box, type in AIBB. c. Tap to Download the application. d. Click Install button to proceed with the application installation. |
| 2. LOG ON to the AIBB Mobile Trading on your Android mobile device. | <ol style="list-style-type: none"> a. Run the AIBB Mobile Trading application. b. Enter your AIBB Mobile Trading User ID* and Password*. c. Select Sign In. d. The Market screen appears (default screen). |

Connecting

To Start the Program

1. Start the **AIBB Mobile Trading** like you do for any other program on your Android mobile device.
2. On your Android menu, tap on the **AIBB Mobile Trading** icon.

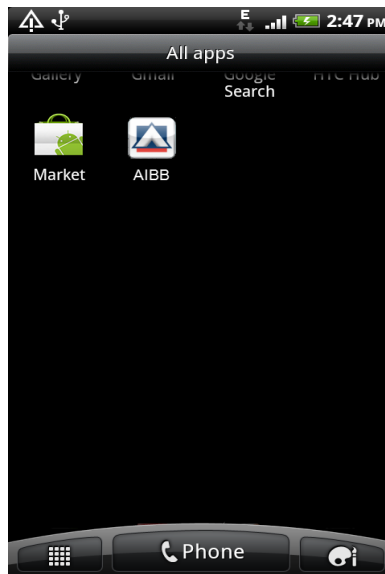


Figure 1. AIBB: **AIBB Mobile Trading** icon

To Log On

1. Start the **AIBB Mobile Trading**.
2. On the **User Login** screen, enter your **User ID*** and **Password***.
3. The system will display the message below if you click **Sign In** without entering either your **User ID*** or **Password***.

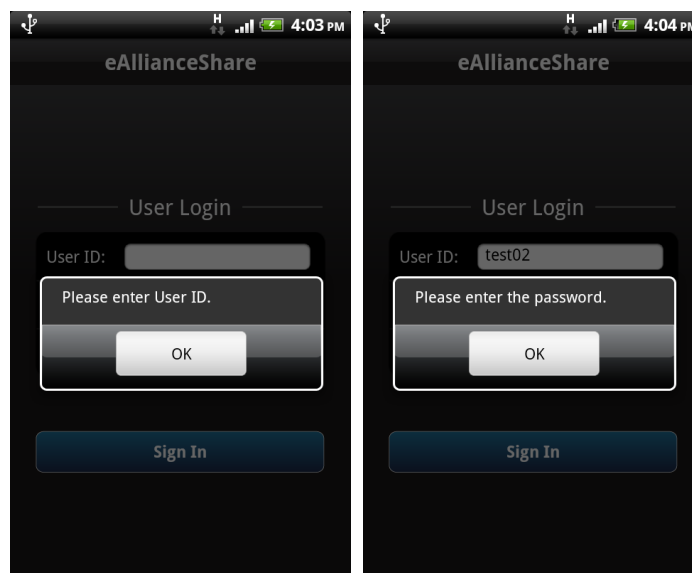


Figure 2. AIBB: Prompt for **User ID*** & **Password*** credential

4. Click **OK**. Enter your **User ID*** and **Password***.
5. Click **Sign In**.

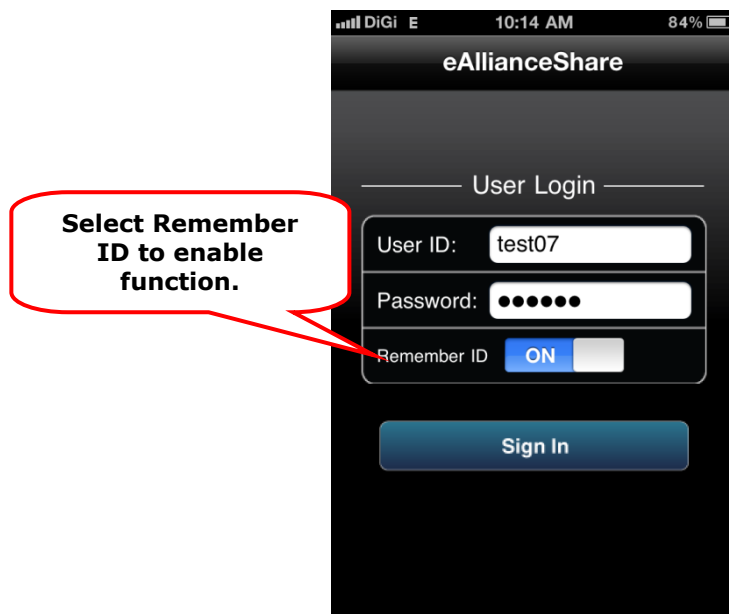


Figure 3. AIBB: Enter **User Login** & select **Remember ID** menu

If you want the program to remember your **User ID***, you can turn **Remember ID** on by tapping the **Remember ID** option button. **DO NOT** select this option if you are using a shared Android mobile device.

6. Tap **Sign In**.
7. You will see the **Market** as your default screen in your **AIBB Mobile Trading** as shown below.

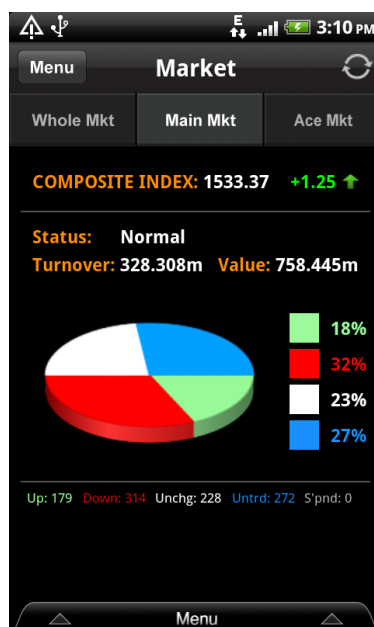


Figure 4. AIBB: **Market** screen

Note:

You are allowed only 3 consecutive unsuccessful login attempts. Contact <[eAllianceShare Helpdesk](#)> to resolve this problem.

*This is identical to the one that you use to access the **AIBB** website at <http://www.eallianceshare.com.my> . If you are not registered at the said portal, please do so prior to registering for **AIBB Mobile Trading**.

To Access the Menu

1. From the **Market** screen, tap **Menu** on the top or at the bottom of your Android screen.

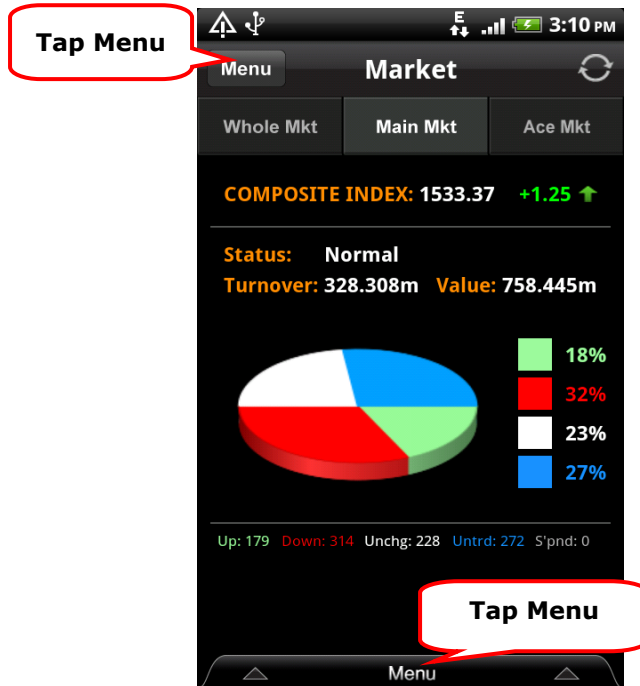


Figure 5. AIBB: Tap **Menu** from the **Market** screen

2. The **AIBB Mobile Trading Menu** screen as shown below appears.

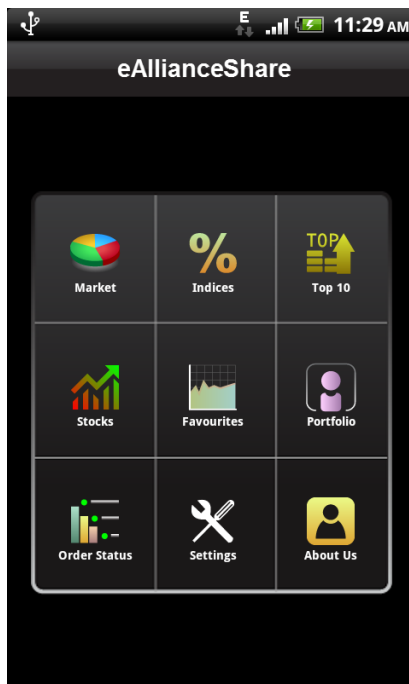


Figure 6. AIBB: **Mobile Trading Menu** screen

To Log Off/Quit the Program

1. From the **AIBB Mobile Trading Menu**, tap **Settings**.

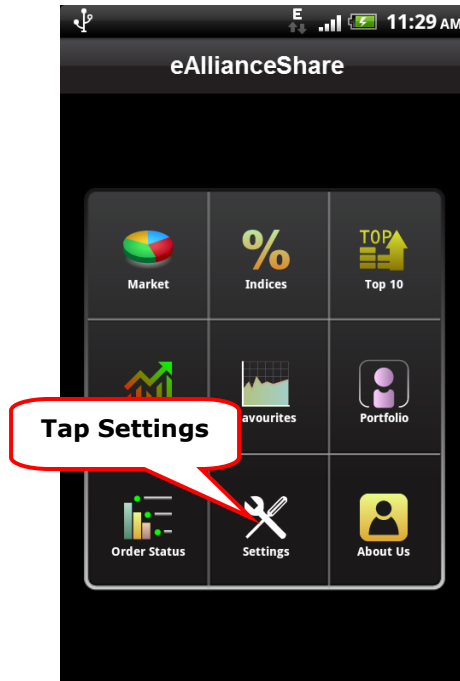


Figure 7. AIBB: **Mobile Trading Menu**

2. Then tap **Profile**.

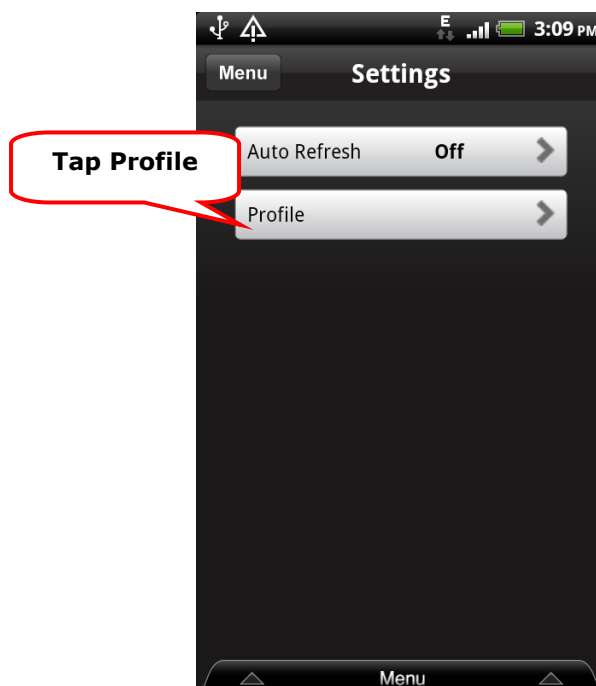


Figure 8. AIBB: **Settings - Profile**

3. **Profile** screen appears. Tap **Logout**.

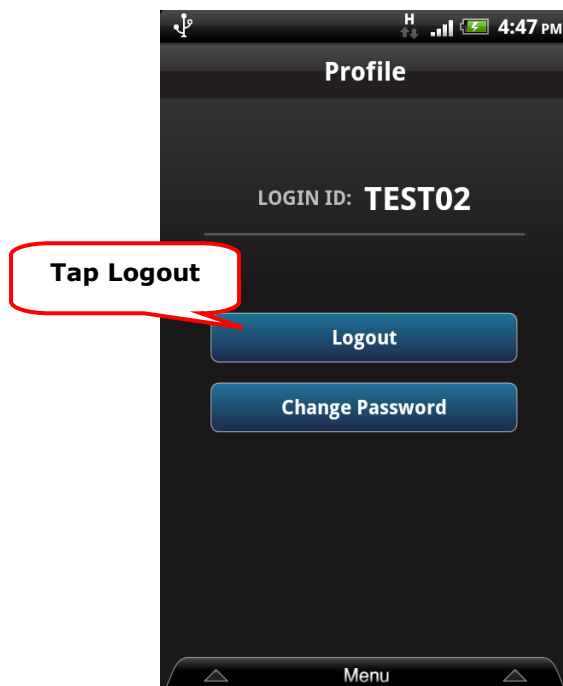


Figure 9. AIBB: **Profile - Logout**

4. The system will display a confirmation message. Tap **OK** to confirm.

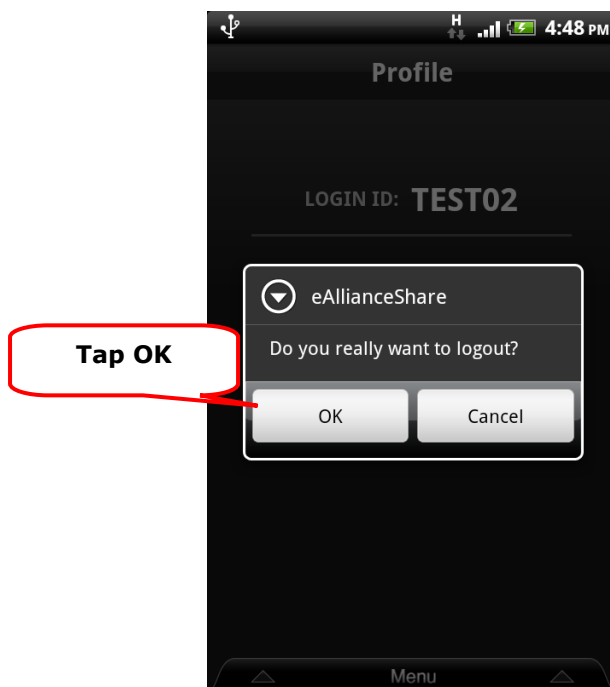
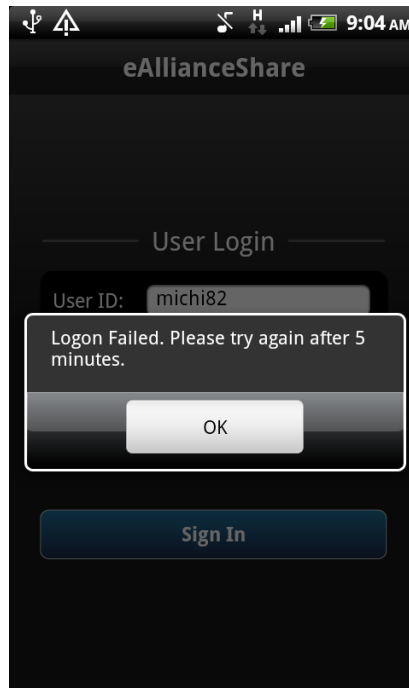


Figure 10. AIBB: **Profile - Logout** confirmation

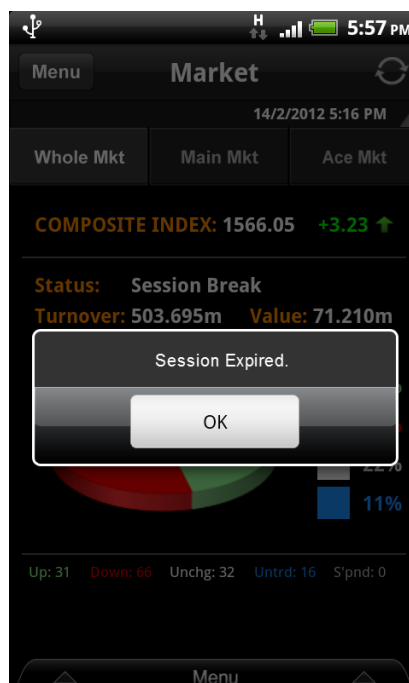
Single Sign In

AIBB Mobile Trading is equipped with a **Single Sign In** feature. It will not allow a concurrent login using the same **User ID*** at the same time for security purposes. A message will be displayed as shown below:



Mobile Trading Session Expiry

AIBB Mobile Trading automatically acknowledges if a user has left the application unattended for a certain period.



A user needs to re-login to continue with the new trading session.

HOME button

When a user taps the **Home** button, a user will be logged out from **AIBB Mobile Trading**.

1. A user will then need to relaunch **AIBB Mobile Trading**.
2. Mobile trading **User Login** screen will be prompted.
3. A user need to enter the **User ID*** and **Password*** to re-login into **AIBB Mobile Trading**.

Change Password

There are 2 ways to change a user’s password.

1. Self Password Change

1. Tap **Change Password** at the **Profile** screen.

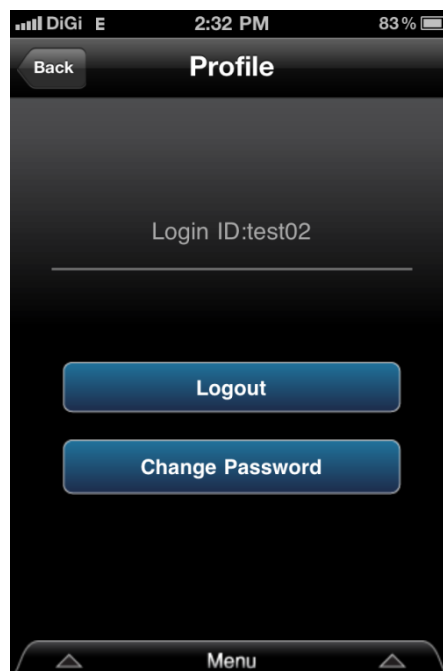


Figure 11. AIBB: **Profile - Change Password**

2. **Change Password** screen is then displayed.

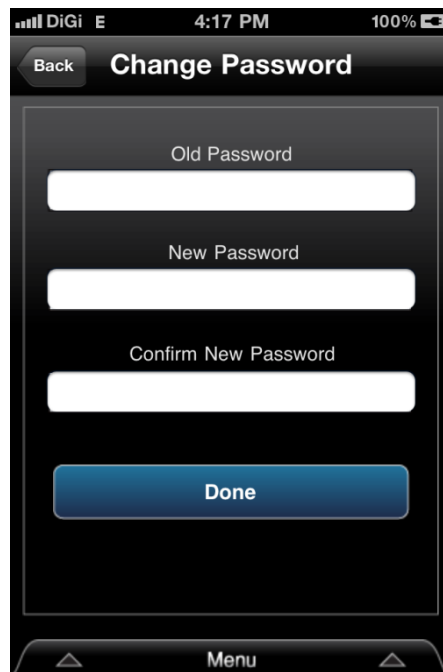


Figure 12. AIBB: **Change Password**

3. Enter **Old Password**, **New Password** and then **Confirm New Password**.
4. Click **Done** to save the changes.

2. Auto-Prompt Change Password Reminder

1. The **Change Password** reminder will be prompted if the password expiry is due in 3 days.

Note: (The settings for the password expiry is done by the Administrator).

2. Click **OK** to proceed with the **Change Password** process as explained in the **Self Password Change** section.

The AIBB Mobile Trading Menu

The **AIBB Mobile Trading Menu** lists the functions and features available on **AIBB Mobile Trading**.

You will access this menu often.

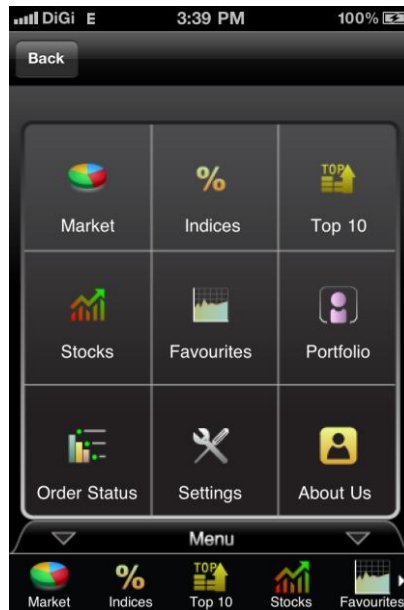


Figure 13. AIBB: **Mobile Trading Menu** screen

| Select | To | See more |
|---------------------|---|------------|
| Market | View a summary of the whole market, or of a particular board. This feature shows a breakdown of the total number of shares according to price changes. | on page 16 |
| Indices | View market indices, both standard (FBM KLCI, FBM EMAS, etc.) and sectorial (Mining, Plantation, etc.). This feature shows key index figures and intraday index charts. | on page 19 |
| Top 10 | View the list of Top 10 shares sorted by volume, price increase and price decrease. | on page 22 |
| Stocks | View the details of an individual share. This feature shows key quote figures, company info. and the intraday price chart. | on page 24 |
| Favourites | Open the 5 Favourites folders. Shares you want to keep track of can be bookmarked in a folder. | on page 29 |
| Portfolio | Display the trading portfolio of selected shares. | on page 57 |
| Order Status | Track your order: view the details, reduce the order, or cancel the order altogether. | on page 42 |
| Settings | Manage your settings for viewing ID, etc. | on page 57 |
| About Us | Brief introduction on AIBB . | on page 60 |

Colour Code

Green, red, and white indicate positive, negative, and zero change in the share price and index. Untraded shares are labeled blue, suspended shares gray. On which particular board is a share listed on is indicated by the colour of its share name and code: **Main Market**, cyan; **ACE Market**, magenta.

| Colour | Description |
|---------|---------------------|
| Green | Increase in value. |
| Red | Decrease in value. |
| White | No change in value. |
| Blue | Untraded share. |
| Gray | Suspended share. |
| Cyan | Main Market share. |
| Magenta | ACE Market share. |

Market, Indices, Top 10 Lists

Market

Market allows you to see a summary overview on the market's performance at any given time in the trading day. You can select to have an overview of the whole market or a particular board. In either case, you will be able to view the changes of share prices (versus its opening prices) that have:

- increased; or
- decreased; or
- remained unchanged.

You can also view the number of untraded and suspended shares.

To view Market

1. On the **AIBB Mobile Trading Menu**, select **Market**.
2. On the **Market** screen, open the menu that list the particular board: **Whole Market, Main Market** or **ACE Market**.
3. On that menu, select the board you wish to view.
4. For example, to view the **Main Market**, select **Main Market**. To view the entire market, select **Whole Market**.

Market : The Interface

The **Market** screen is as shown below. Colours used can be interpreted using the [colour code](#) on page 15. The interfaces for **Whole Market**, **Main Market** and **ACE Market** are similar.



Figure 14. AIBB: **Market - Whole Market** screen

| Item | Description |
|------|--|
| 1 | Back to the AIBB Mobile Trading Menu icon. |
| 2 | Market selection tabs. Highlighted tab is the board whose market is being viewed. |
| 3 | FBM Kuala Lumpur Composite Index (FBM KLCI). |
| 4 | Trading status. |
| 5 | The total volume of transactions (in number of shares). |
| 6 | The pie chart for the data in items 8-11. Each sector in the pie share colour with the corresponding item, e.g. the blue sector represents untraded shares. |
| 7 | The total number of shares according to the pie chart colour with prices higher than yesterday's closing price, shares with prices lower than yesterday's closing price, shares with an unchanged price, untraded shares and suspended shares. |
| 8 | The percentage of untraded shares. |
| 9 | The percentage of unchanged shares. |
| 10 | The percentage of shares with prices lower than yesterday's closing price. |

| Item | Description |
|------|---|
| 11 | The percentage of shares with prices higher than yesterday's closing price. |
| 12 | The total value of transactions (in Ringgit Malaysia). |
| 13 | The percentage of the FBM KLCI. |
| 14 | Refresh information icon. |

Indices

AIBB Mobile Trading lets you view any of the 2 types of indices: *standard market indices* (such as the FBM KLCI or Shariah) or *sectorial indices* (such as Technology or Mining).

To view Index

1. On the **AIBB Mobile Trading Menu**, select **Indices**.
2. Screen is as shown below.

Indices: The Interface

The index information for the **FBM KLCI** is shown below. Colours used can be interpreted using the [colour code](#) on page 15. The interfaces for the other indices are similar.

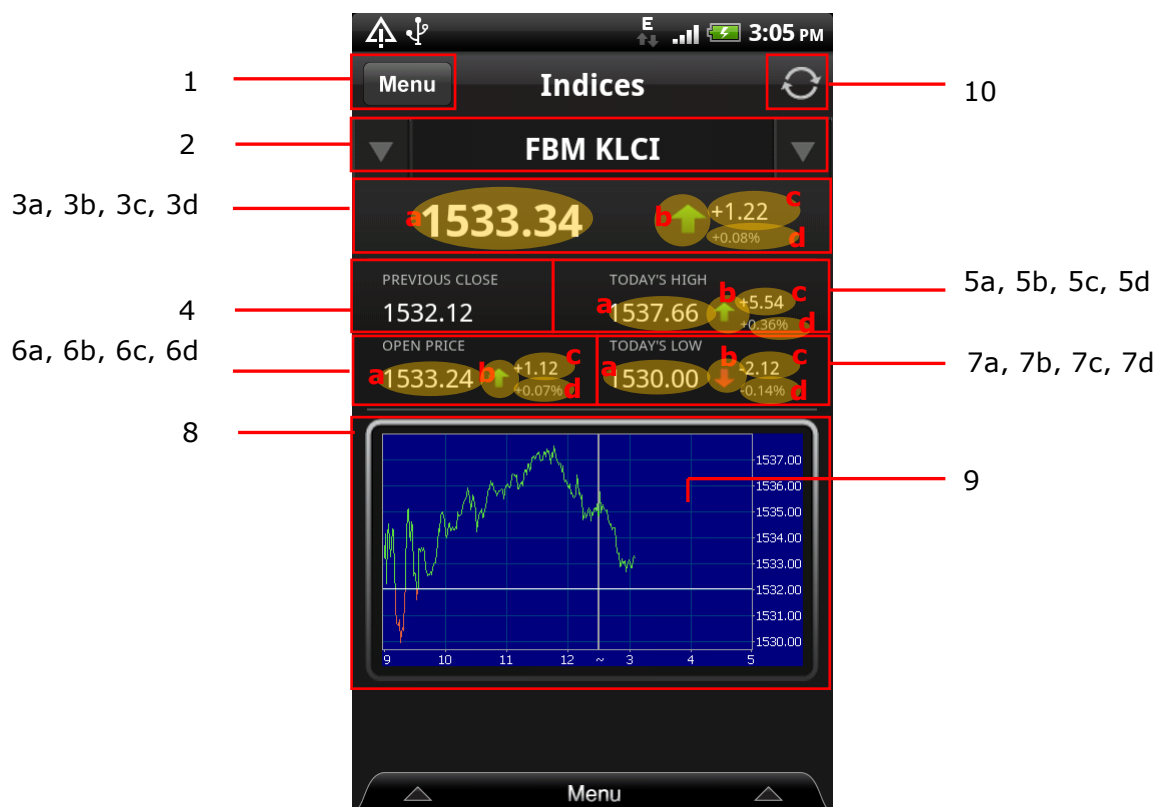


Figure 15. AIBB: **Indices** - information screen

| Item | Description |
|------|---|
| 1 | Back to the AIBB Mobile Trading Menu icon. |
| 2 | The index name. |
| | 3a: the last updated value. 3b: up/down/unchanged arrow parallel with the changes in 3c and 3d. 3c: the change of the last updated value from the reference value. 3d: the change from the value in 3c expressed as percentage of the reference value. |

| Item | Description |
|------|---|
| 4 | The previous day's closing value. |
| 5 | 5a: the highest value. 5b: up/down/unchanged arrow parallel with the changes in 5c and 5d. 5c: the change of the highest value from the reference value. 5d: the change from the value in 5c expressed as percentage of the reference value. |
| 6 | 6a: the opening value. 6b: up/down/unchanged arrow parallel with the changes in 6c and 6d. 6c: the change of the opening value from the reference value. 6d: the change from the value in 6c expressed as percentage of the reference value. |
| 7 | 7a: the lowest value. 7b: up/down/unchanged arrow parallel with the changes in 7c and 7d. 7c: the change of the lowest value from the reference value. 7d: the change from the value in 7c expressed as percentage of the reference value. |
| 8 | Indices Intraday Chart. |
| 9 | The reference value baseline. If the chart exceeds this baseline, it appears in green, if it falls below this baseline, it appears in red. |
| 10 | Refresh Information icon. |

To Change Index View from List

1. To change the view to other indices, tap on the down arrow at the index name area.
2. A screen with the list of indices shall be displayed.



Figure 16. AIBB: **Indices** - listing screen

3. Tap on the index name that you wish to view, for example: tap on **FBM KLCI** index as shown below.



Figure 17. AIBB: **Indices** - FBM KLCI screen

Top 10 Lists: Most Active Counters, Top Gainers, Top Losers

AIBB Mobile Trading provides you with the lists of the **Top 10** shares in terms of volume, gain and loss. In the following table, the 3 lists are described.



| List | Description |
|-----------------------------|--|
| Most Active Counters | The 10 shares with the greatest volume of transactions. |
| Top Gainers | The 10 shares with the greatest increase in share price. |
| Top Losers | The 10 shares with the greatest decrease in share price. |

The **Top 10** information item - last done price, price change, volume, best buy price, best sell price, highest price, and lowest price are shown.

To View a Top 10 List

1. On the **AIBB Mobile Trading Menu**, select the **Top 10** list you wish to view. For example, if you wish to view the **Most Active Counters** list, select **Most Active Counters**.
2. The **Top 10** list screen appears, showing the list. Tap and slide up or slide down the screen to see all the 10 shares.

Top 10 List: The Interface

The **Most Active Counters** list are shown below. Colours used can be interpreted using the [colour code](#) on page 15. Scroll right or left by tapping  or  to view more column details such as **Buy**, **Sell**, **High** and **Low**. You may also view **Last**, **Change** and **Volume** details. The interfaces for the **Top Gainers** and **Top Losers** lists are similar.

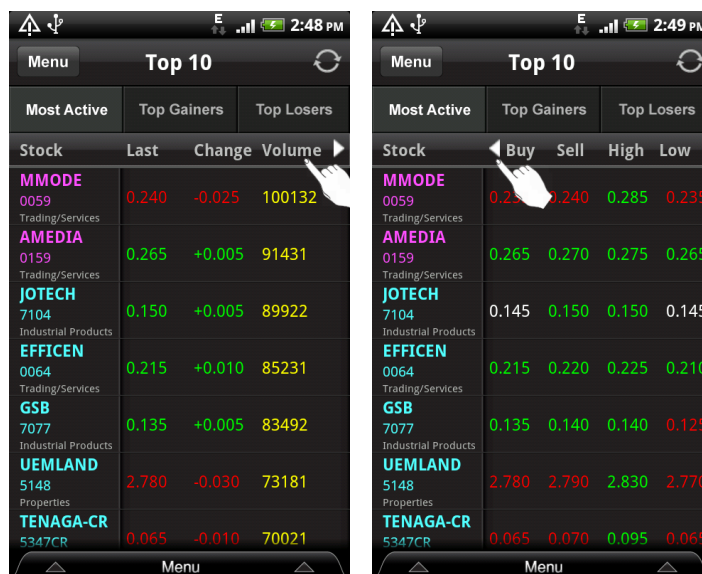


Figure 18. AIBB: **Top 10 - Most Active** screen

(At left screen: Tap the right arrow to view more details as shown on the right screen)

(At the right screen: Tap the left arrow to return to the left screen)

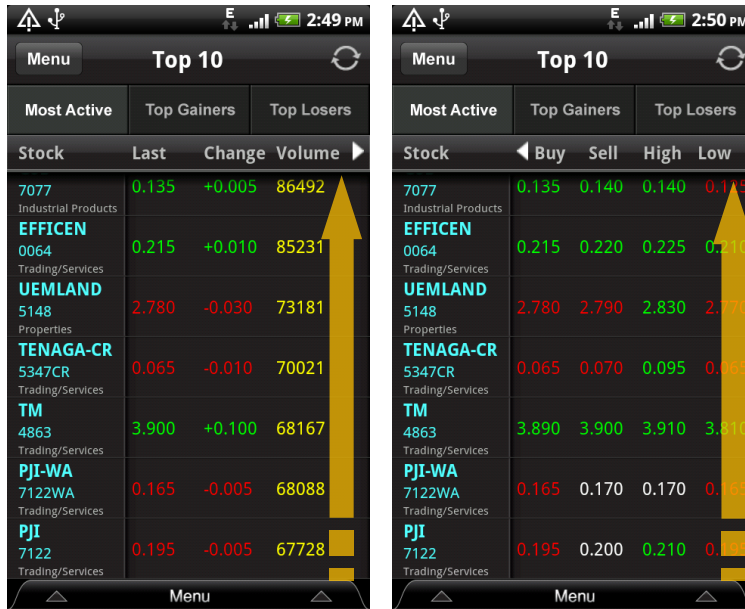


Figure 19. AIBB: **Top 10 - Most Active** listing scrolling

(At the left screen: Scroll up and tap right arrow to view the list as shown on the right screen)

(At the right screen: Tap left arrow to return to the left screen)

From the **Top 10** list, you may view a single share quote details by tapping on the share name.

Single Stock Quote and Favourites

Single Stock Quote

The **Stocks** feature details 3 types of information on a particular share, with each type of information separately displayed on its individual page: key price figures on the **Quote** page, company and share information on the **Info** page and the intraday price chart on the **Chart** page.

To Search and View a Share's Quote

Selecting **Stocks** on the **Menu** is the easiest way to get a share's quote. On the screen that appears you can just search for the share using the **Search** feature. Other ways exist, as well.

| To | Do this |
|--|--|
| <p>Search for a share quote.</p> <p>Note: Use Search if you don't know the exact share code or name, or if you only know the board and sector on which a share is listed. Browse the Search results to get the share quote you want to view.</p> | <ol style="list-style-type: none"> From the AIBB Mobile Trading Menu, select Stocks. On the Stocks screen, a search entry box is displayed. Type in full or partial Share Name or Share Code that you want to Search. <i>When you start an app or select a field that requires text or numbers, the on - screen keyboard becomes available.</i> Tap Search from the on - screen keyboard. The Search result will be displayed. Tap on the exact share name to view its details. |
| View a share's quote when the share is listed on a Top 10 list. | <ol style="list-style-type: none"> From the AIBB Mobile Trading Menu, tap Top 10. From the list that appears, tap on the desired share. |
| View a share's quote when the share is bookmarked in a Favourites folders. | <ol style="list-style-type: none"> From the AIBB Mobile Trading Menu, tap Favourites. From the Favourites folder list, tap on the desired Favourites folder. From the list that appears, tap on the desired share. |

Single Stock Quote: The Interface

AIBB Mobile Trading provides a keyword search method for users to search for the share that they wish to view. The keyword maybe partial of the complete word searched. You may also enter the Share Code (full or partial) and then tap **Search** from the on - screen keyboard.

The Search Stock Quote Screen



Figure 20. AIBB: **Stocks** - Search screen

Tap on one of the shares from the result list. The share's quote screen is as shown below. It consists of 4 different views that are **Quote**, **Queue**, **Info** and **Chart**. Colours used here can be interpreted using the [colour code](#) on page 15.

The Quote Page



Figure 21. AIBB: **Stock - Quote** screen

| Item | Description | | | | | | | | | | | | | | | | | | | | | | | | |
|-------|--|--|---------------------------------|--------------------|--------------------|-------|----------------------------|------|--------------------|-------|-----------------------------------|-----|-------------------|-------|--|---------|--------------------|---------|-----------------------------------|--------|------------------|-------|--------------------|--|--|
| 1 | The share name and code. | | | | | | | | | | | | | | | | | | | | | | | | |
| 2 | The share's sector. | | | | | | | | | | | | | | | | | | | | | | | | |
| 3 | Current screen view (Quote , Queue, Info or Chart). | | | | | | | | | | | | | | | | | | | | | | | | |
| 4 | <p>4a: The last updated price e.g. 8.800, the change of the last updated price from the reference price e.g. +0.040, the change of the last updated price from the reference price (expressed as percentage of the reference price) e.g. +0.46%.</p> <p>4b: The best 3 buy prices offered and the volume of transactions for each price.</p> <p>4c: The best 3 sell prices offered and the volume of transactions for each price.</p> | | | | | | | | | | | | | | | | | | | | | | | | |
| 5 | Buy and Sell button (tap to Buy or Sell). | | | | | | | | | | | | | | | | | | | | | | | | |
| 6 | <table border="1"> <tr> <td>Volume</td> <td>The total of shares transacted.</td> <td>Open</td> <td>The opening price.</td> </tr> <tr> <td>Value</td> <td>The value of transactions.</td> <td>High</td> <td>The highest price.</td> </tr> <tr> <td>Trans</td> <td>The total number of transactions.</td> <td>Low</td> <td>The lowest price.</td> </tr> <tr> <td>Buy %</td> <td>The percentage of transactions that are buy bids at the offered sell prices.</td> <td>Upr Lmt</td> <td>The ceiling price.</td> </tr> <tr> <td>Prv Avg</td> <td>The previous day's average price.</td> <td>LwrLmt</td> <td>The floor price.</td> </tr> <tr> <td>Close</td> <td>The closing price.</td> <td></td> <td></td> </tr> </table> | Volume | The total of shares transacted. | Open | The opening price. | Value | The value of transactions. | High | The highest price. | Trans | The total number of transactions. | Low | The lowest price. | Buy % | The percentage of transactions that are buy bids at the offered sell prices. | Upr Lmt | The ceiling price. | Prv Avg | The previous day's average price. | LwrLmt | The floor price. | Close | The closing price. | | |
| | Volume | The total of shares transacted. | Open | The opening price. | | | | | | | | | | | | | | | | | | | | | |
| | Value | The value of transactions. | High | The highest price. | | | | | | | | | | | | | | | | | | | | | |
| | Trans | The total number of transactions. | Low | The lowest price. | | | | | | | | | | | | | | | | | | | | | |
| | Buy % | The percentage of transactions that are buy bids at the offered sell prices. | Upr Lmt | The ceiling price. | | | | | | | | | | | | | | | | | | | | | |
| | Prv Avg | The previous day's average price. | LwrLmt | The floor price. | | | | | | | | | | | | | | | | | | | | | |
| Close | The closing price. | | | | | | | | | | | | | | | | | | | | | | | | |

The Queue Page



Figure 22. AIBB: **Stock - Queue** screen

| Item | Description |
|------|--|
| 1 | The share name and code. |
| 2 | The share's sector. |
| 3 | Current screen view (Quote, Queue , Info or Chart). |
| 4 | 4a: From left to right: The last updated price e.g. 8.800 , the change of the last updated price from the reference price e.g. +0.040 , the change of the last updated price from the reference price (expressed as percentage of the reference price) e.g. +0.46% and total transacted shares (Vol) e.g. 14,517 . |
| 5 | 5a: Total Order Queue in shares/Order Queue in value. 5b: The best five buy prices offered and the volume of transactions for each price. 5c: Total Order Queue in shares/Order Queue in value. 5d: The best five sell prices offered and the volume of transactions for each price. |
| 6 | Buy and Sell button (tap to Buy or Sell). |

The Info Page

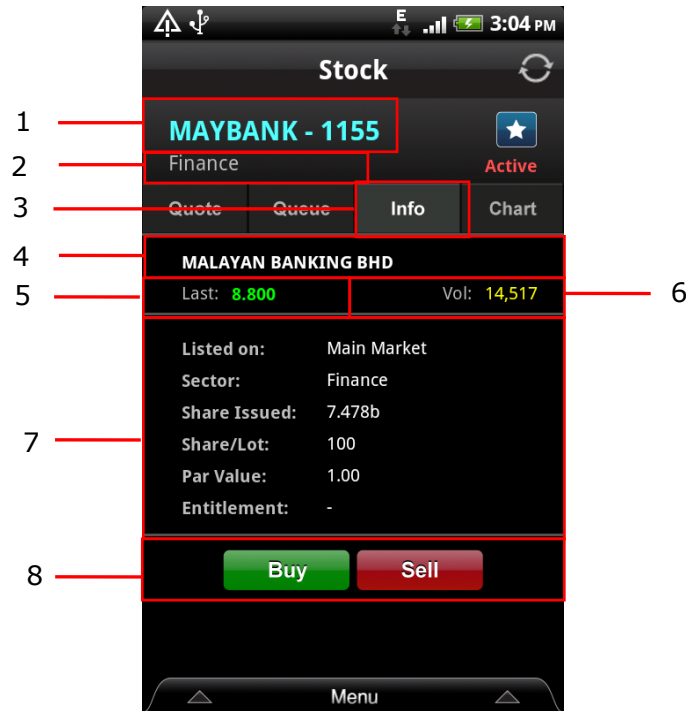


Figure 23. AIBB: **Stock - Info** screen

| Item | Description | | | |
|------|--|----------------------------------|-------------|--|
| 1 | The share name and share code. | | | |
| 2 | The share's sector. | | | |
| 3 | Current screen view (Quote, Queue, Info or Chart). | | | |
| 4 | The company name. | | | |
| 5 | The last updated price. | | | |
| 6 | The volume of transactions. | | | |
| 7 | Listed On | The market the share belongs to. | Share/Lot | Shares per lot. |
| | Sector | The sector the share belongs to. | Par Value | The share's par value. |
| | Share Issued | The number of shares issued. | Entitlement | The entitlement status: C (cum) or X (ex) or - (none). |
| 8 | Buy and Sell button (tap to Buy or Sell). | | | |

The Chart Page

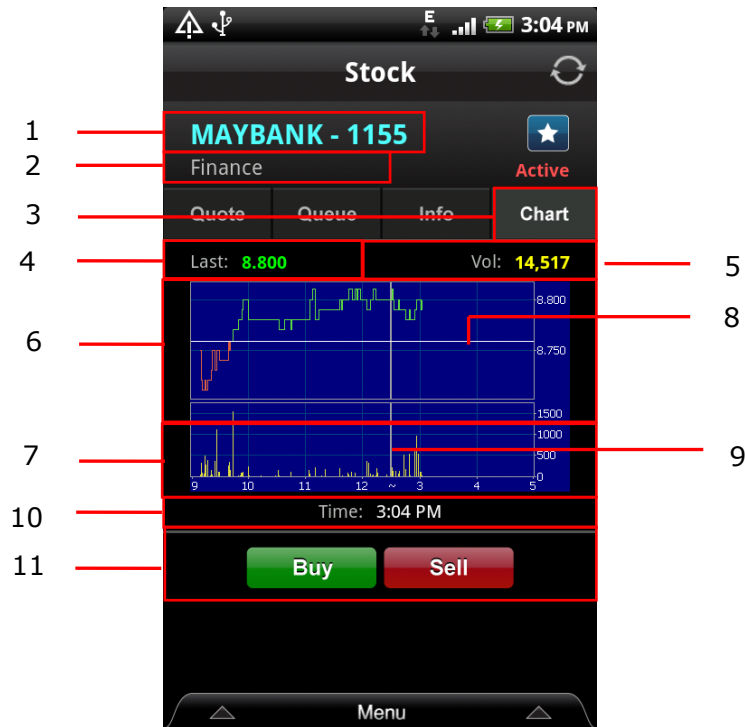


Figure 24. AIBB: **Stock - Chart** screen

| Item | Description |
|------|--|
| 1 | The share name. |
| 2 | The share's sector. |
| 3 | Current screen view (Quote, Queue, Info or Chart). |
| 4 | The last updated price. |
| 5 | The volume of transactions. |
| 6 | The intraday price chart. |
| 7 | The intraday volume chart. |
| 8 | The reference price baseline. |
| 9 | The session break (lunch hour). |
| 10 | Trading hour (real time). |
| 11 | Buy and Sell button (tap to Buy or Sell). |

Favourites

The **Favourites** feature allows you to bookmark shares that you have viewed and want to keep track of so that you can easily access them in the future.

You can have a maximum of 5 **Favourites** folders and a maximum of 10 shares in each folder. By default, 1 folder is labeled according to your mobile trading system's name, but you can rename it if you wish to do so. You can sort the shares in ascending or descending order and swap the positions of 2 shares. You can delete 1 share or empty the whole folder.

For each **Favourites** folder, there are 2 different views: detail view (1 share) and list view (10 shares). Detail view list all the information of 1 share on a single page, scrolling to the next page gives you all the information of another share. List view lists all shares on a page; scrolling to the next page gives you other information not shown on the one you were looking at.

To View a Favourites Folder

1. On the **AIBB Mobile Trading Menu**, select **Favourites**.
2. Select the **Favourites** folder you want to open.

To Switch between Views of a Favourites folder

1. Open the folder. On the folder window, open a menu of actions.
2. On that menu, select **1 share** (detail view), or **10 shares** (list view).
3. If you are on the detail view, scroll left (or right) to see other shares not on the page you are viewing.

Favourites: The Interface

From the **AIBB Mobile Trading Menu**, if you tap on **Favourites**, the **Favourites** screen consisting of **Favourites** folder(s) list will be displayed. From this screen, you can:

- ▶ View the existing **Favourites** folder; or
- ▶ Create a new **Favourites** folder.

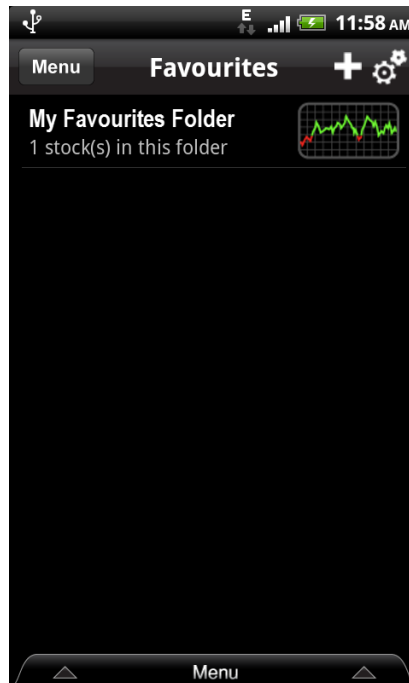


Figure 25. AIBB: **Favourites** screen

View Existing Favourites Folder

1. To view the existing **Favourites** folder, tap on the existing **Favourites** folder name.
2. Tap on the share name to view the details.

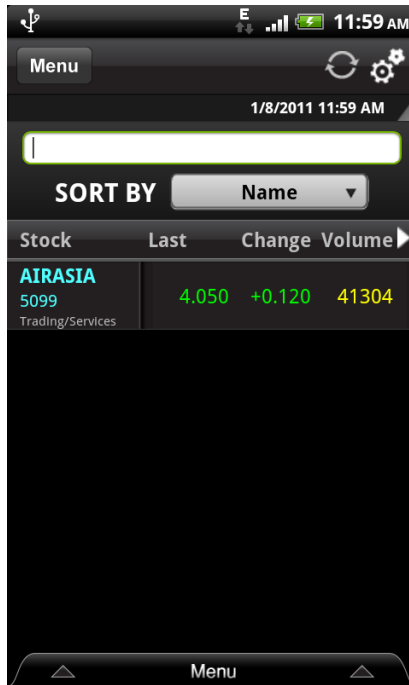


Figure 26. AIBB: View a share in an existing **Favourites** folder

Create a New Favourites Folder

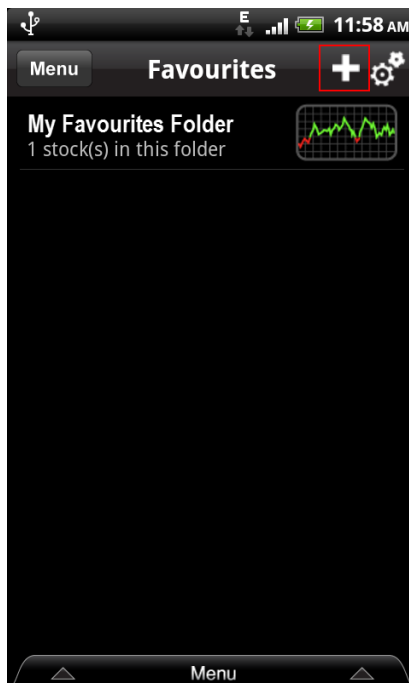



Figure 27. AIBB: Tap on the icon to create a new **Favourites** folder

1. To create a new folder from the **Favourites** menu, tap the **Add**  icon on the top right of the screen.
2. Type in the new **Favourites** folder name.

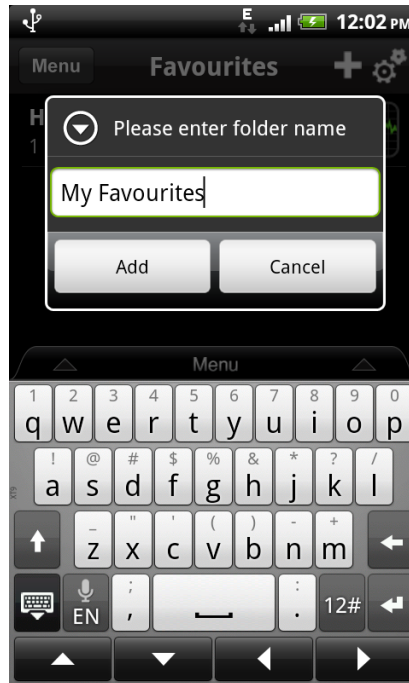


Figure 28. AIBB: Type in the new **Favourites** folder name

3. Tap **Add** to add in the new **Favourites** folder.
4. The new folder is now successfully created.

To Add a Share to a Favourites Folder

Now that you already created a **Favourites** folder.

1. Tap on the folder's name.

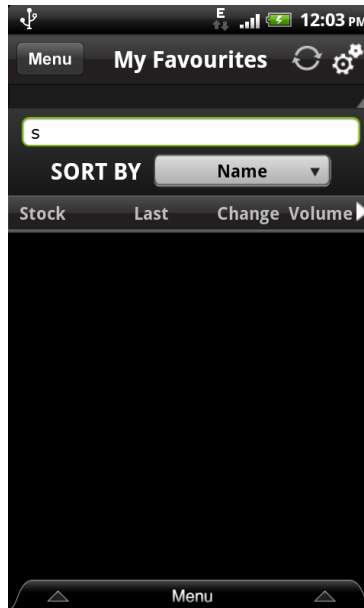


Figure 29. AIBB: Type in the share name to add to the **Favourites** folder

2. Type in the share name (full or partial will do). Tap **Search** from on - screen keyboard. A list of the **Search Result** that matches the search criteria will be displayed.

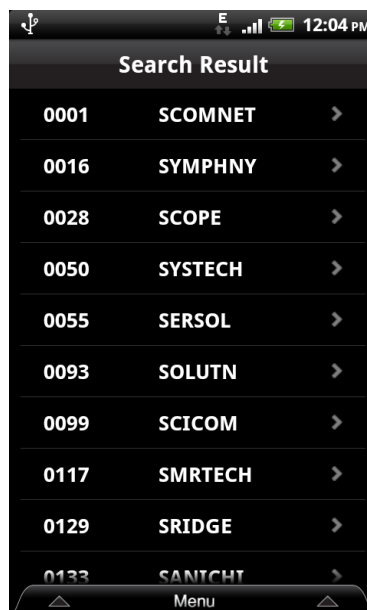


Figure 30. AIBB: Share's **Search Result**

3. Tap on the preferred share to add to the **Favourites** folder.
4. A confirmation message displayed. Click **OK**.
5. A successful message will be displayed.

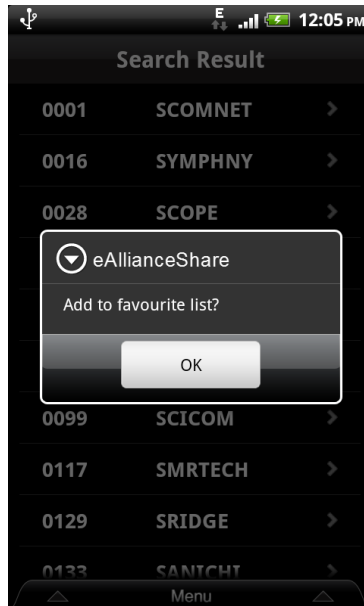


Figure 31. AIBB: Confirmation to add a share into the **Favourites** folder

6. Tap **OK** to save. The newly added share is as shown below.

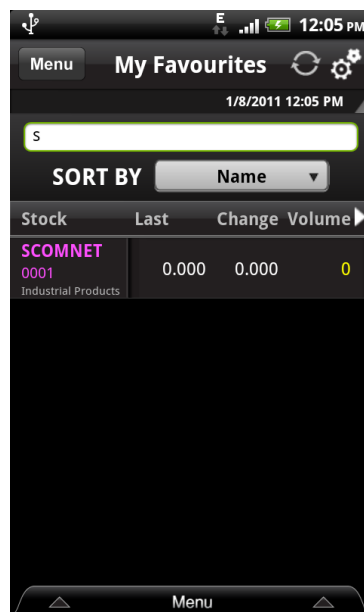


Figure 32. AIBB: Selected share successfully added into the **Favourites** folder

Repeat the same steps from step 2 until step 6 to add more shares into the **Favourites** folder as shown below.

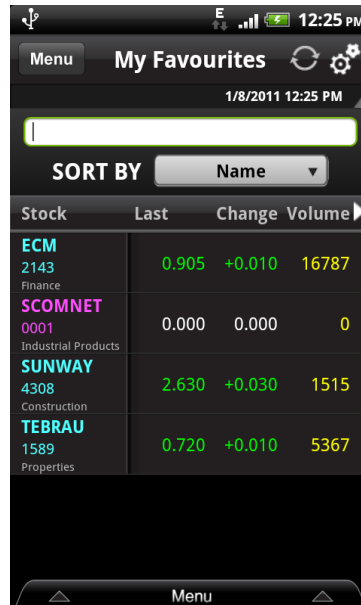


Figure 33. AIBB: More shares added into the **Favourites** folder

To Manage a Favourites Folder (Sorting or Deleting Share from a Favourites Folder)

To manage the **Favourites** folder, you are allowed to sort the shares in the folder by various selections such as by share name, share last done price, share price change, share volume, share highest price and share lowest price.

You can also delete a share from the **Favourites** folder or even delete the **Favourites** folder itself.

1. To sort the **Favourites** shares accordingly, tap the left or right arrow of **Sort By** slider. Sorting selections are by **Share's Name, Last, Change, Volume, High** and **Low**.

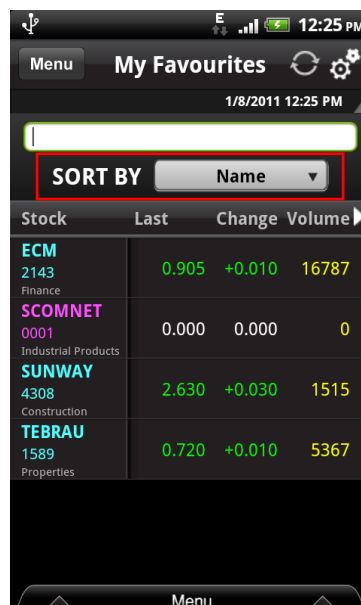


Figure 34. AIBB: Tap on the **Sort By** dropdown list

2. Tap on the preferred sorting selection, for example by the last done price (**Last**). The **Favourites** share then will be sorted according to the last done price as shown below.

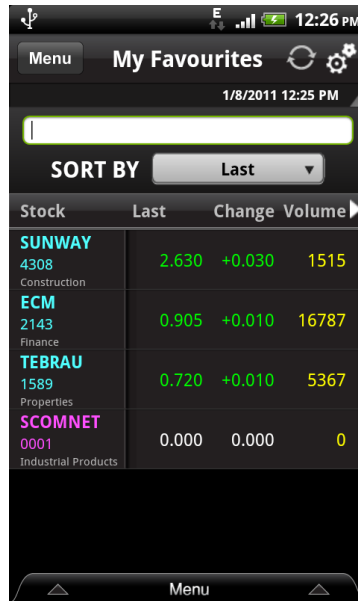


Figure 35. AIBB: Shares sorting result for the **Favourites** folder

3. To delete a share from the **Favourites** list, tap the **Delete**  icon.

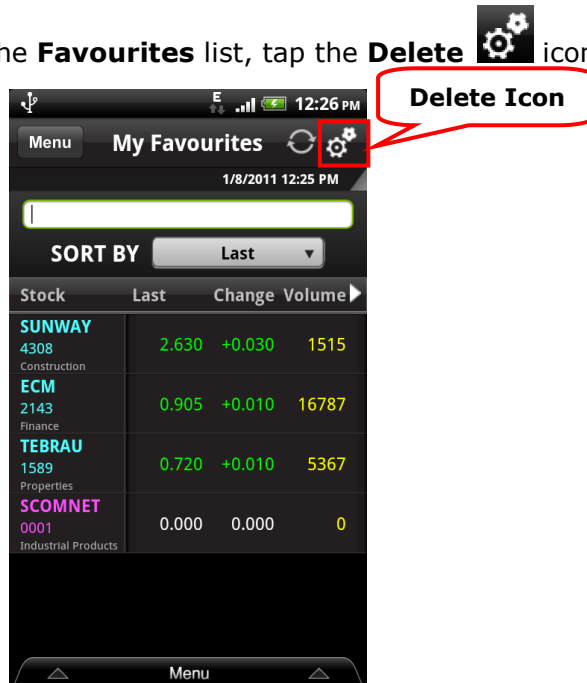



Figure 36. AIBB: Click **Delete** icon

4. Tap on the check box(es) for the share(s) to be deleted.
5. Next, tap on the **Delete**  button.
6. A confirmation message will be displayed

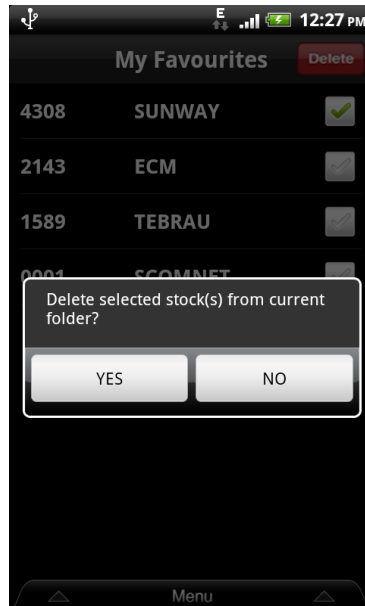


Figure 37. AIBB: Delete share(s) from **Favourites** confirmation message

7. Tap **YES** to confirm deletion or **NO** to cancel.
8. A successful message will be displayed.

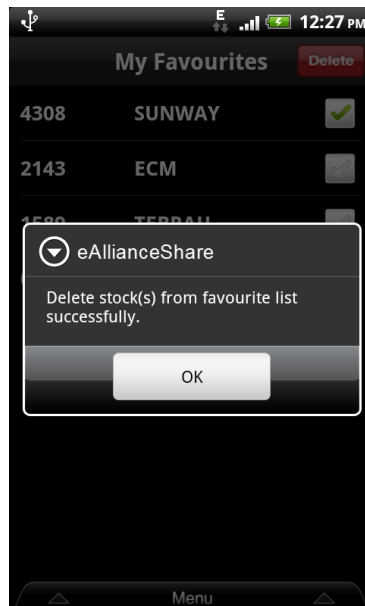


Figure 38. AIBB: Successful share deletion from the **Favourites** folder

9. Tap **Done** to return to the previous screen with the updated share list.
10. The share will then be deleted from a **Favourites** folder list.

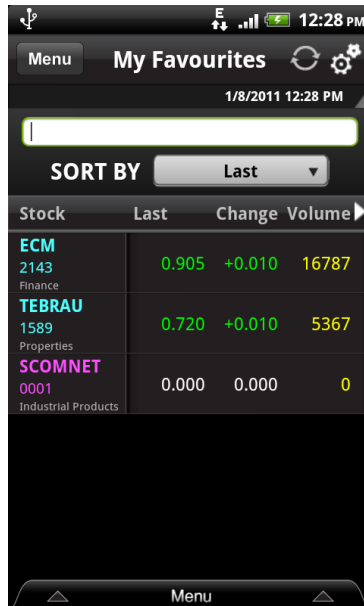


Figure 39. AIBB: Updated shares list in the **Favourites** folder after deletion

11. To delete the **Favourites** folder itself, from the **Favourites** folder list, click the

Delete  icon.

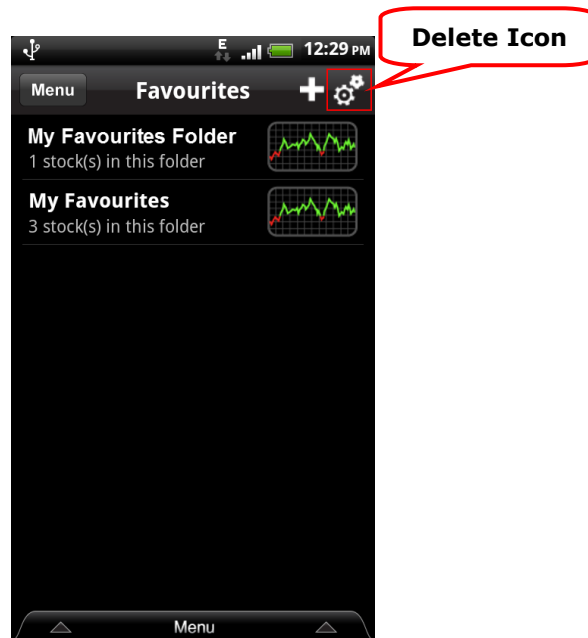


Figure 40. AIBB: Click the **Delete** icon

12. Check on the check box(es) of the folder name to be deleted.

13. Next, tap **Delete** .

14. A confirmation message will be displayed

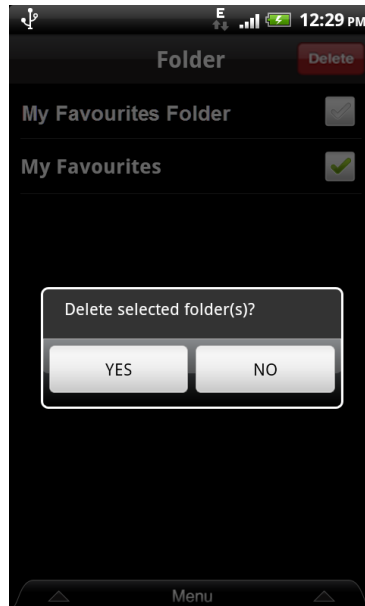


Figure 41. AIBB: **Delete Favourites** folder confirmation and successfully deleted folder message

15. Tap **YES** to confirm the deletion. Screen displays the selected **Favourites** folder removed from the list.
16. Click **Done** to complete the deletion process.

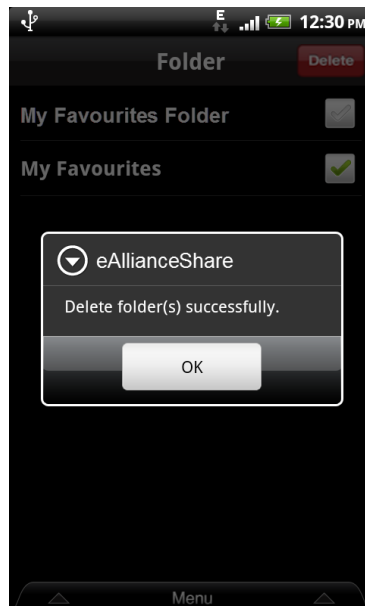


Figure 42. AIBB: **Favourites** folder deletion.

17. The screen shall display the updated **Favourites** folder list after the deletion.

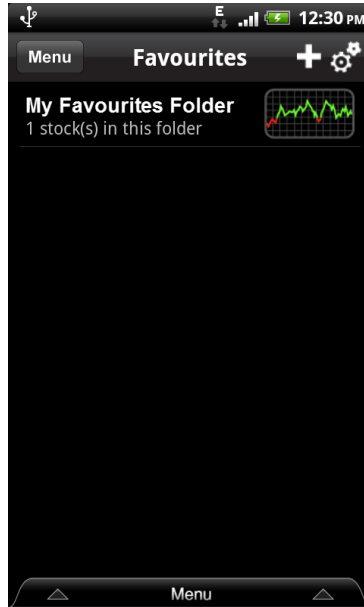


Figure 43. AIBB: **Favourites** folder successfully deleted / removed

Placing and Tracking Orders

Trading using **AIBB Mobile Trading** is secure and easy.

You need to enter your **Trading Password** whenever you want to place a **Buy** or **Sell** order. You can **Buy** (or **Sell**) shares at the three best **Buy** (or **Sell**) prices, or you can bid at your own price. Once an order is placed, you can track its status. You can view the details of the order, reduce the order, or cancel it altogether.

Placing Orders

You can place an order from the various menus that you can access in **AIBB mobile Trading**, namely the **Stocks**, **Favourites** and **Top 10** menus. These menus provides share listing and you can place an order on any share listed there by tapping on the share's name which will bring you to the **Stock** detail screen.

To Place a Buy Order

1. From the **Stock** detail screen, tap on **Buy**.

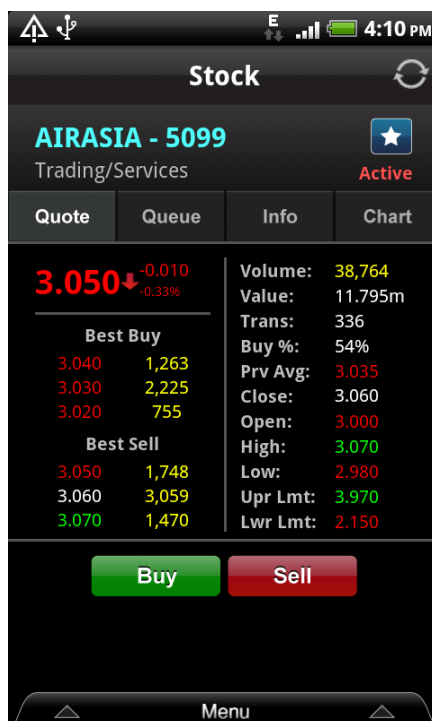


Figure 44. AIBB: Select share to **Buy**

2. A **Buy** screen will be displayed with **Best Buy** price queue, closing price, last done price, volume of shares transacted, etc.

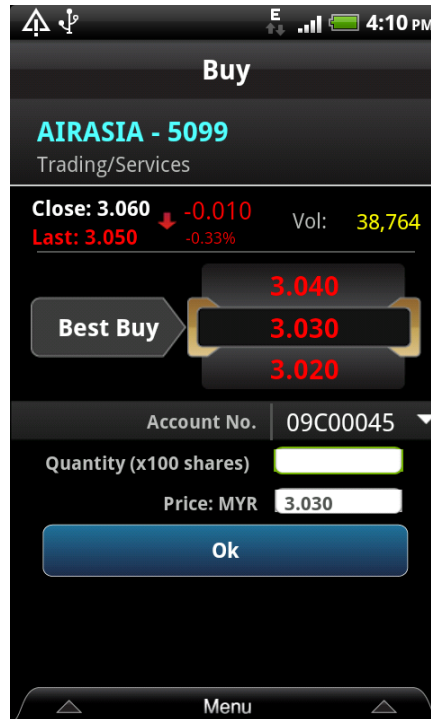


Figure 45. AIBB: Select **Best Buy** price and enter **Buy** information screen

3. On the **Buy** screen that appears, you can perform these actions:
 - a. **Best Buy** – tap on the share’s **Best Buy** price that you intend to buy. For example here the selected **Best Buy** price is **MYR 3.460** (text box filled with dark colour).
 - b. **Account No.** – If you have more than 1 account, select the account number you wish to use. If you have only 1 trading account, the account number will be automatically selected.
 - c. **Quantity (x100 shares)** – Enter the number of lots (x100 shares) that you intend to buy.
 - d. **Price: MYR** – The selected **Best Buy** price will be automatically entered here.
4. Tap **OK** to proceed to **Buy** the shares. A message prompting for you to fill in the **Trading Password** box to continue will be prompted.

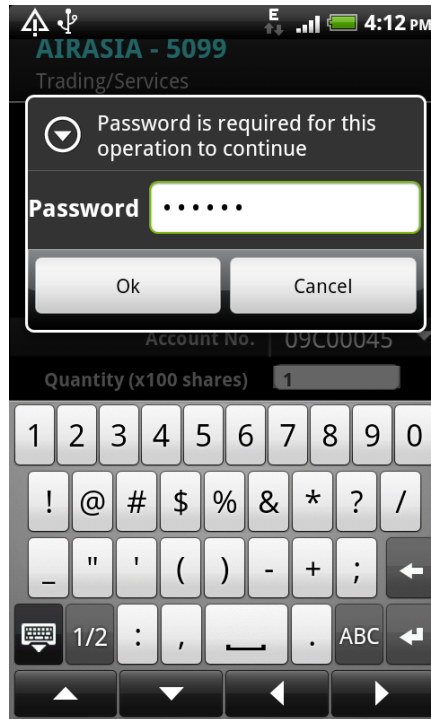


Figure 46. AIBB: **Trading Password** entry screen

5. Enter your **Trading Password** in the **Trading Password** box.
6. Tap **OK**. An **Order Confirmation** screen will be displayed.

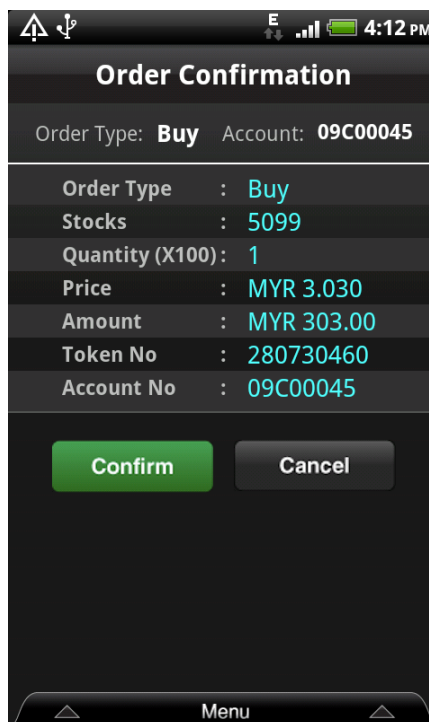


Figure 47. AIBB: **Order Confirmation** screen

7. Tap **Confirm** to confirm placing the order.
8. A successful message will be displayed upon the order being successfully sent.

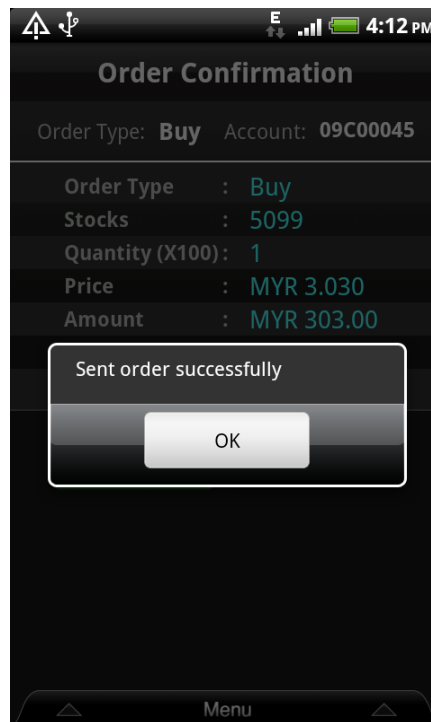


Figure 48. AIBB: **Successful Order Sent** screen

9. Tap **OK** to return to the previous screen.

To Place a Sell Order

Repeat steps in **To Place a Buy Order**, substituting every occurrence of **“Buy”** with **“Sell.”**

1. From the **Stock** detail screen, tap the **Sell** button.

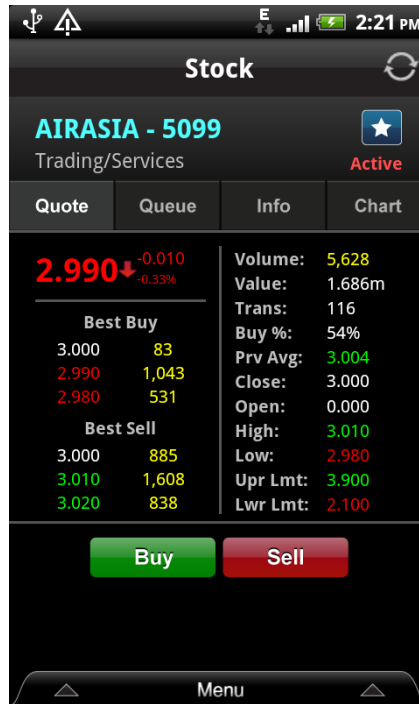


Figure 49. AIBB: Select the share to **Sell**

2. A **Sell** screen will be displayed with **Best Sell** price queue, closing price, last done price, volume of shares transacted, etc.

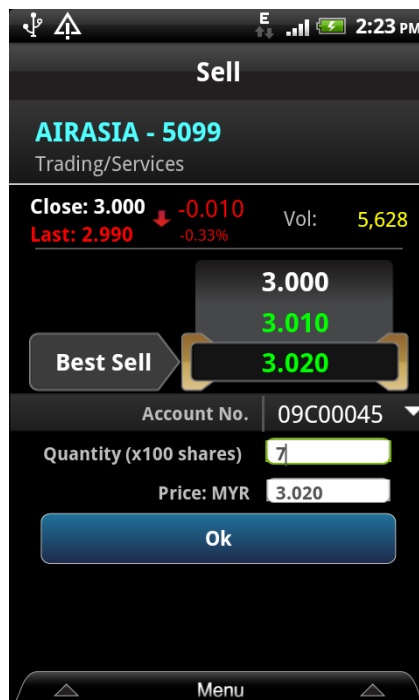


Figure 50. AIBB: Select **Best Sell** price and enter **Sell** information screen

3. On the **Sell** screen that appears, you can perform these actions:
 - a. **Best Sell** – tap on the share’s **Best Sell** price that you intend to sell. For example here the selected **Best Sell** price is **MYR 3.400** (text box filled with dark colour).
 - b. **Account No.** – If you have more than 1 account, select the account number you wish to use. If you have only 1 trading account, the account number will be automatically selected.
 - c. **Quantity (x100 shares)** – Enter the number of lots (x100) that you intend to sell.
 - d. **Price: MYR** – The selected **Best Sell** price will be automatically entered here.
4. Tap **OK** to proceed with **Sell** the shares. A message prompting for you to fill in the **Trading Password** box will be prompted.

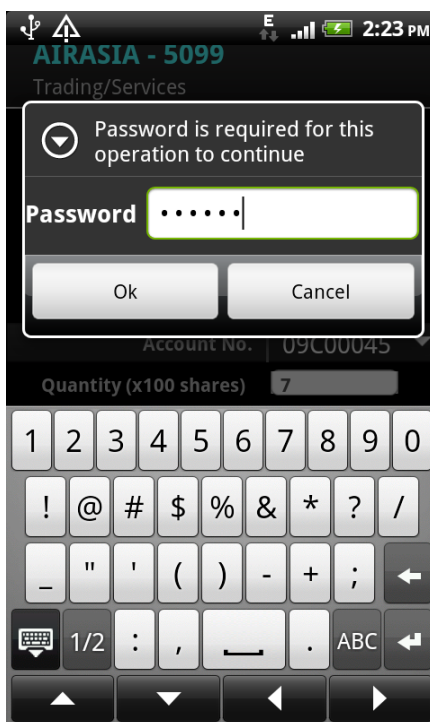


Figure 51. AIBB: **Trading Password** entry screen

5. Enter your **Trading Password** in the **Trading Password** box.
6. Tap **OK**. An order confirmation screen will be displayed.

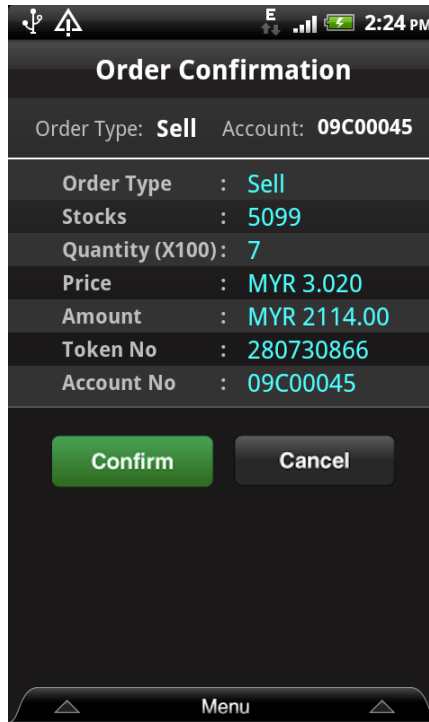


Figure 52. AIBB: **Order Confirmation** screen

7. Tap **Confirm** to confirm placing the order.
8. A successful message will be displayed upon the order being successfully sent.

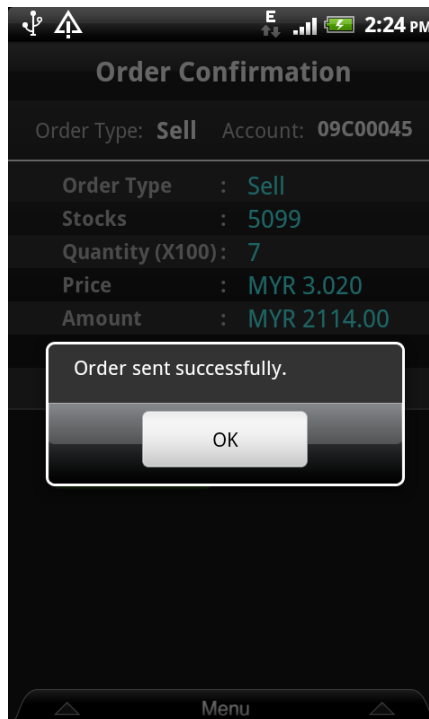


Figure 53. AIBB: **Successful Order Sent** screen

9. Tap **OK**. System will return to the **Order Status** screen.

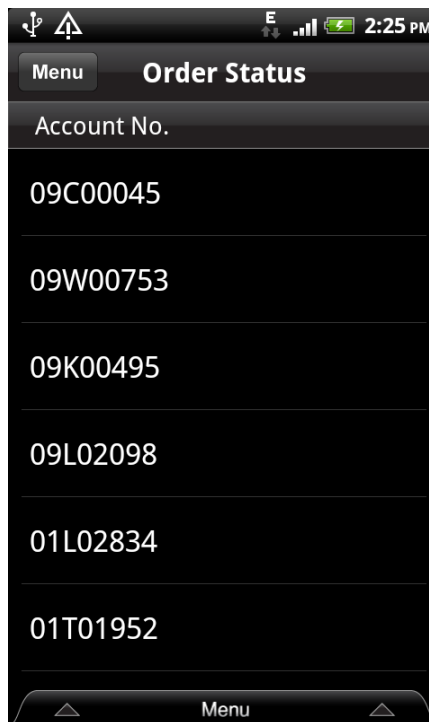


Figure 54. AIBB: **Order Status** screen

10. Tap your **Account No.** to view the status of your **Sell** order as shown below.

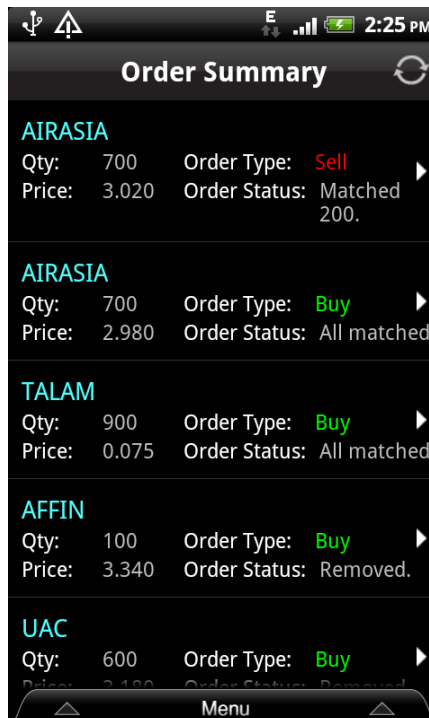


Figure 55. AIBB: Updated **Order Summary** screen

Tracking Orders

Once an order is placed, you can track its status.

After you place an order, the Order Management Server (OMS) sends the order to the broker for processing. The broker then sends that order to Bursa Malaysia. Once it gets there, it stands in queue for matching. The order is executed once a matching is found.

The **Order Status** screen shows a summary list of your orders and their status. On the **Order Status** screen, you can select an order to view its details. You can also reduce or cancel an order, provided it has not been executed.

To View Order Status

1. From the **AIBB Mobile Trading Menu**, select **Order Status**.
2. **Order Status** screen is as shown below.

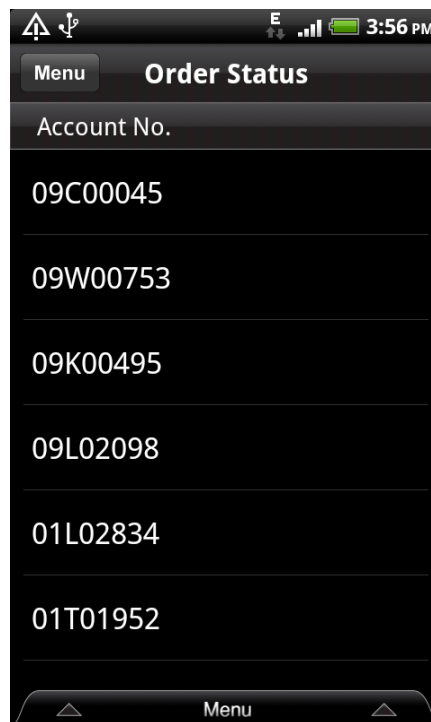


Figure 56. AIBB: **Order Status** screen

3. Tap your **Account No**.
4. The **Order Summary** screen appears, showing the list of orders and the corresponding latest status.

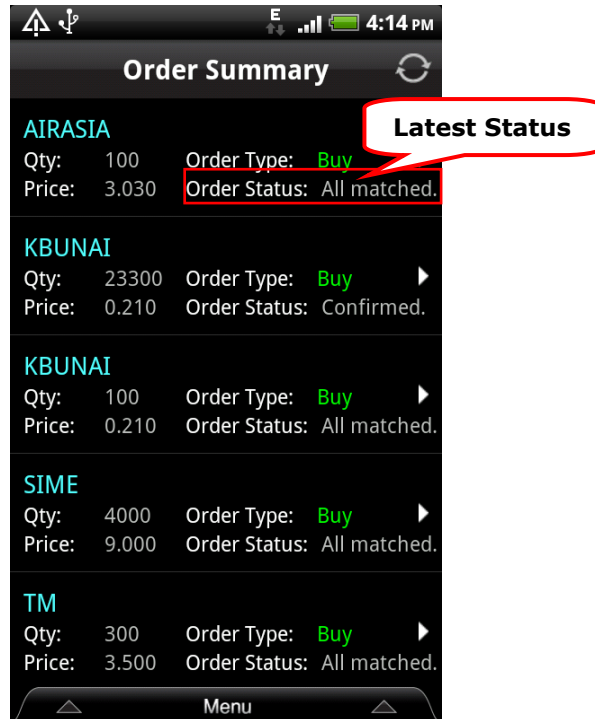


Figure 57. AIBB: **Order Summary** with the **Latest Status**

5. The diagram below describe the status messages that appear on the **Order Status** screen as the order goes through the system.

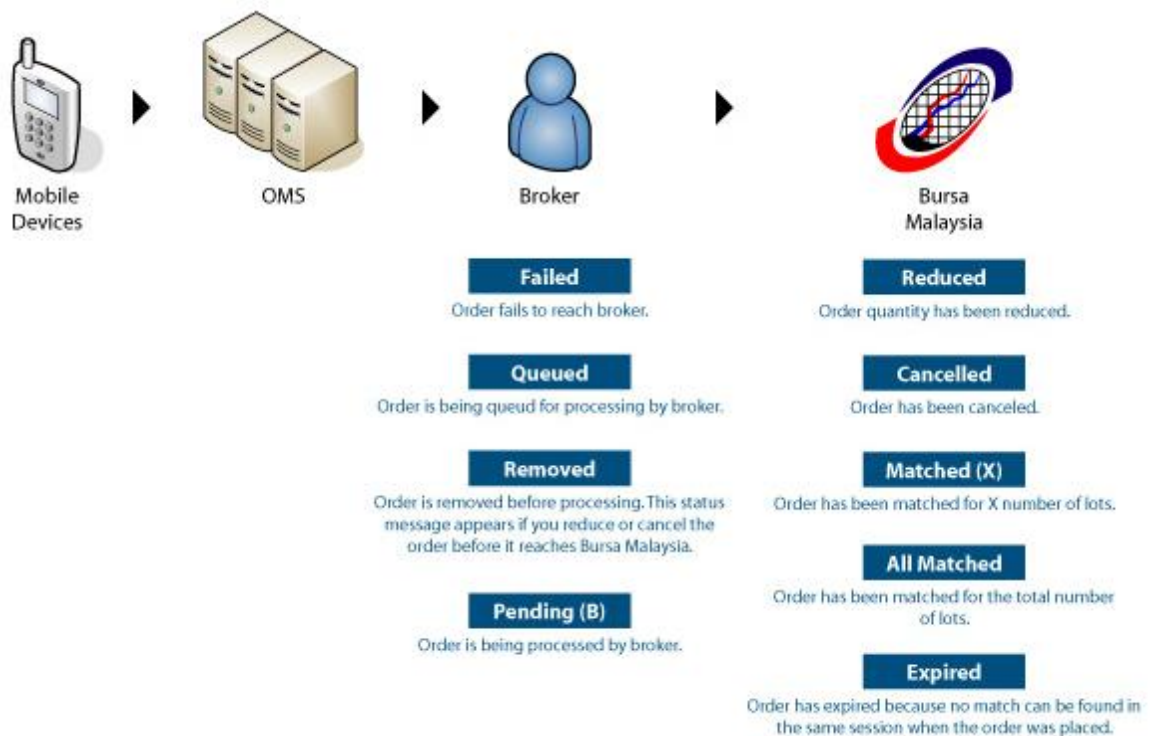


Figure 58. AIBB: **Order Status** tracking flow

Order Properties: The Interface

You may view the **Order Properties** details if you tap on the share name from the **Order Summary** screen.

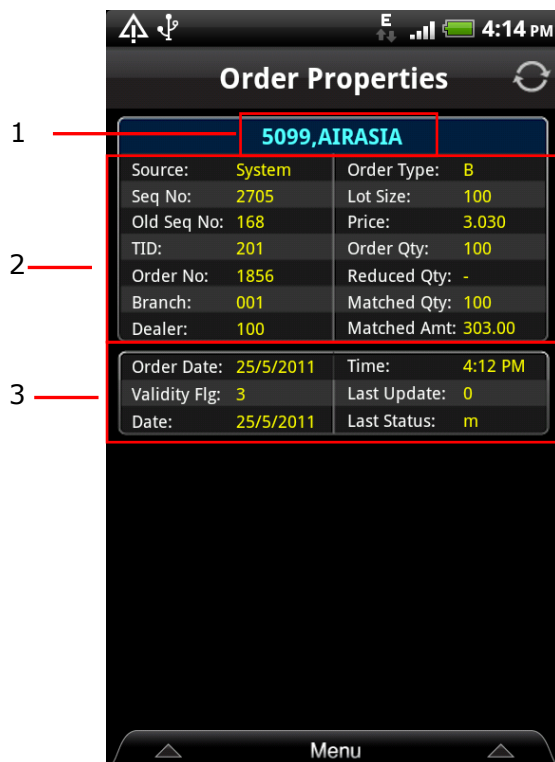


Figure 59. AIBB: **Order Properties** screen

| Item | Description |
|------|--|
| 1 | The share name. |
| 2 | Order Details |
| | Source: System or Phone. |
| | Seq No: Trading day order sequence number (accumulated). |
| | Old Seq No: Previous sequence number recorded. |
| | TID: Terminal ID. |
| | Order No: Order Number. |
| | Branch: Broker Branch code. |
| | Dealer: Dealer Code. |
| | Order Type: The type of transaction order; Buy or Sell . |
| | Lot Size: Total share (x100). |
| | Price: The price of a share. |
| | Order Qty: The quantity (in number of lots) of share in the order. |
| | Reduced Qty: The quantity (in number of lots) of share reduced from the order. |

| Item | Description | |
|------|-------------|---|
| | | Matched Qty: The matched quantity for the order. |
| | | Matched Amt: The matched amount for the order. |
| 3 | | Order Date: The date of the order to execute. |
| | | Validity Flg: Order validity. |
| | | Date: The date when the order was placed. |
| | | Time: The time when the order was placed. |
| | | Last Update: Frequency of update done to the order. |
| | | Last Status: The updated status of the order. |

To Reduce or Cancel an Order

1. From the **AIBB Mobile Trading Menu**, select **Order Status**.
2. **Order Status** screen is as shown below.

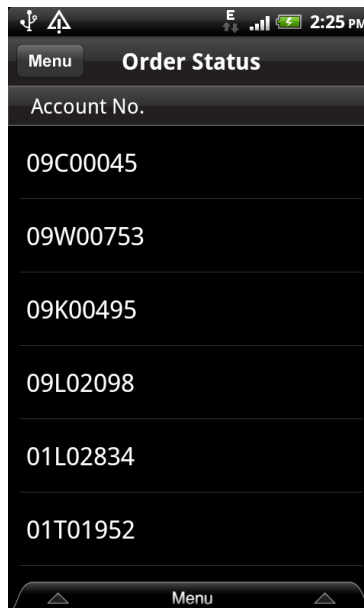


Figure 60. AIBB: **Order Status** screen

3. Tap your **Account No.**
4. The **Order Summary** screen appears, showing the list of orders and the corresponding latest status.

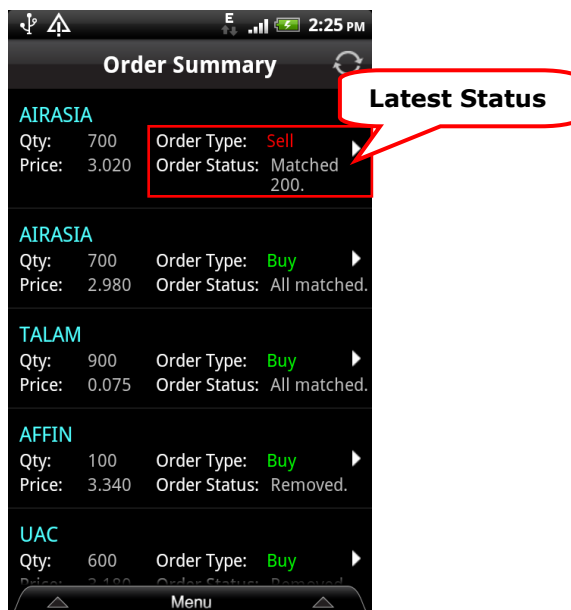


Figure 61. AIBB: Tap on the share to **Reduce/Cancel Order**

5. Tap on the order that you wish to reduce/cancel its amount or quantity. For example tap on **AIRASIA** share.

6. Screen is as shown below.

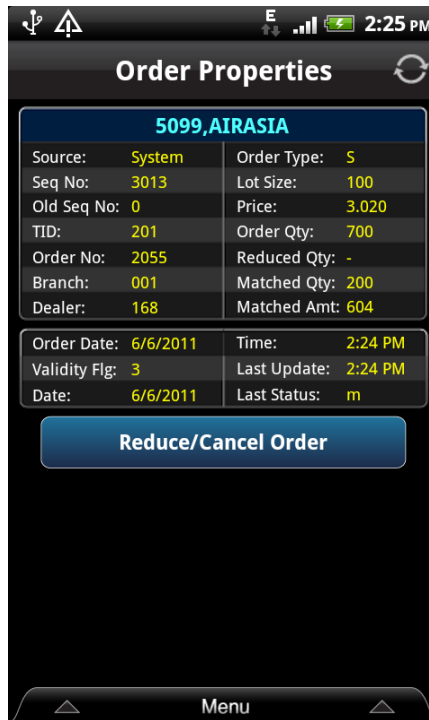


Figure 62. AIBB: **Order Properties** screen

7. Tap on **Reduce/Cancel Order** to either reduce or cancel an order.

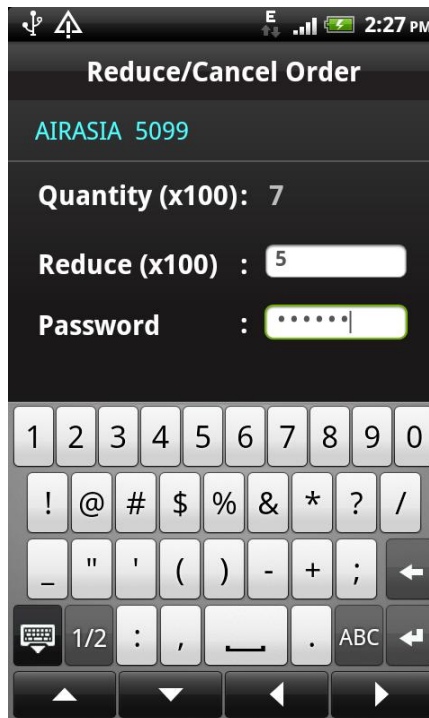


Figure 63. AIBB: **Reduce/Cancel Order** screen

8. Enter the quantity you intend to reduce in the **Reduce (x100)** box and then enter your **Trading Password** in the **Password** box.

9. Tap **Submit**.
10. A successful message will then be displayed.

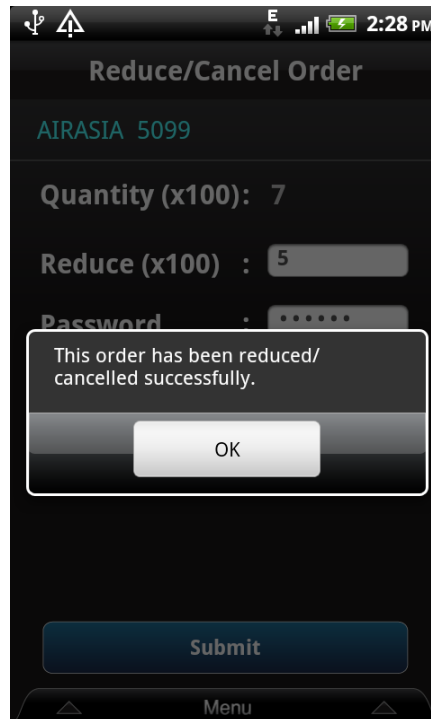


Figure 64. AIBB: **Successfully Cancelled Order** screen

11. The system will return to the **Order Status** list.

Note: You cannot cancel or reduce an order after the said order has been matched.

Portfolio

By accessing the **Portfolio** menu, you may:

- ▶ View your trading portfolio.

View your Trading Portfolio

1. From the **AIBB Mobile Trading Menu**, select **Portfolio**.
2. **Portfolio** screen is as shown below.

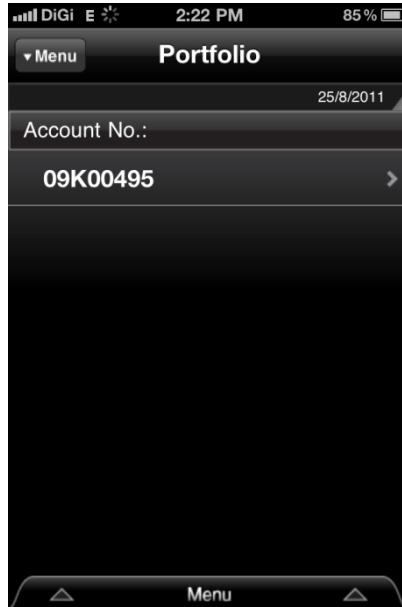


Figure 65. AIBB: **Portfolio** screen

3. Tap **Account No.**.
4. **Portfolio Summary** screen is displayed with the details.

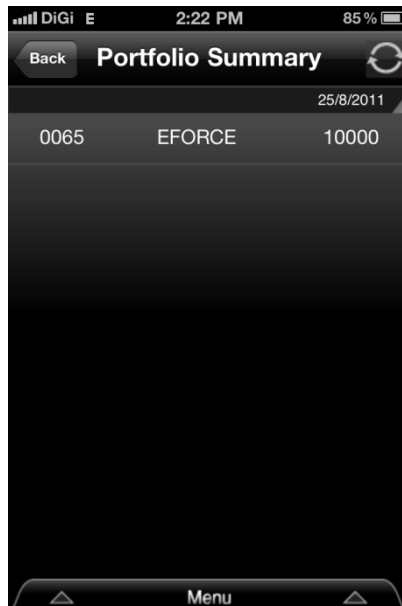


Figure 66. AIBB: **Portfolio Summary** screen

Settings

By accessing the **Settings** module, you may:

- ▶ Set the **Auto Refresh** function.
- ▶ View your **Profile** (and also to **Logout**).

Sets the AIBB Auto Refresh function

1. From the **AIBB Mobile Trading Menu**, select **Settings**.
2. **Settings** screen is as shown below.

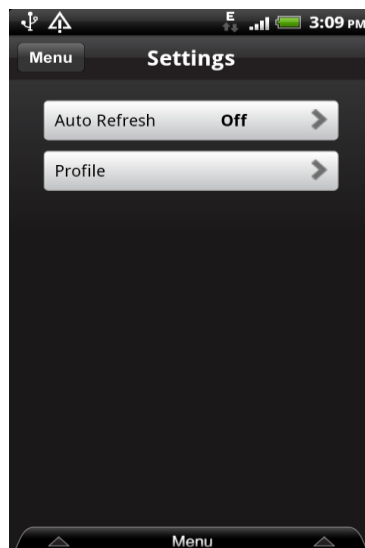


Figure 67. AIBB: **Settings** screen

3. Tap **Auto Refresh**.

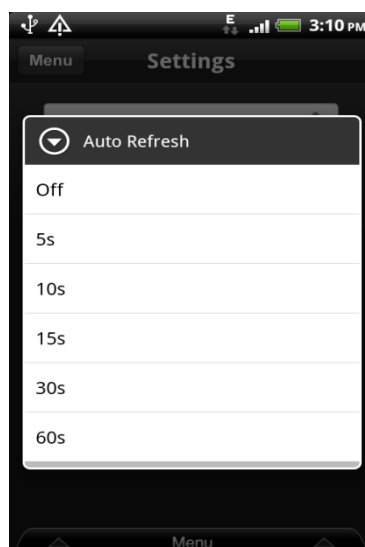


Figure 68. AIBB: **Auto Refresh** screen

4. From **Auto Refresh** list box, tap on your preferred system's **Auto Refresh** function for data retrieved from Bursa Malaysia either every 5, 10, 15 or 30 seconds. Tap **OFF** to disable **Auto Refresh** function.

View Profile function in AIBB

1. From the **AIBB Mobile Trading Menu**, select **Settings**.
2. **Settings** screen is as shown below.

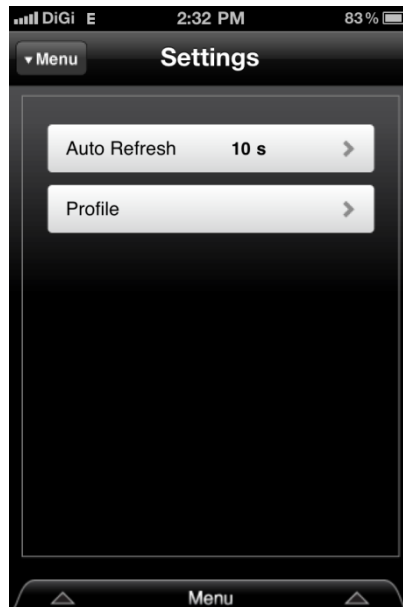


Figure 69. AIBB: **Settings** screen

3. Tap **Profile**.

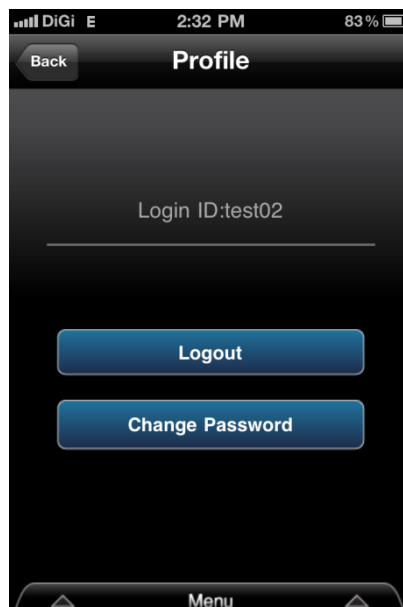


Figure 70. AIBB: View **Profile** (and **Logout**) screen

4. You may view your **Profile** detail here. You may also choose to log out from **AIBB Mobile Trading** by clicking **Logout**.

About Us

By accessing the **About Us** menu, you may:

- ▶ View the brief information on **AIBB**.

View brief information on AIBB

1. From the **AIBB Mobile Trading Menu**, select **About Us**.
2. **About Us** screen is as shown below.



Figure 71. AIBB: **About Us** screen

Contact Our Helpdesk

Should you be in need of further assistance, please do not hesitate to contact us.

Kuala Lumpur Main Office

Helpdesk Tel No : 03 -2604 3888 (Hunting Line)
Fax No : 03-2697 2929
Email : eallianceshare@alliancefg.com
Address : Level 17, Menara Multi-Purpose, Capital Square
8, Jalan Munshi Abdullah
50100 Kuala Lumpur, Malaysia